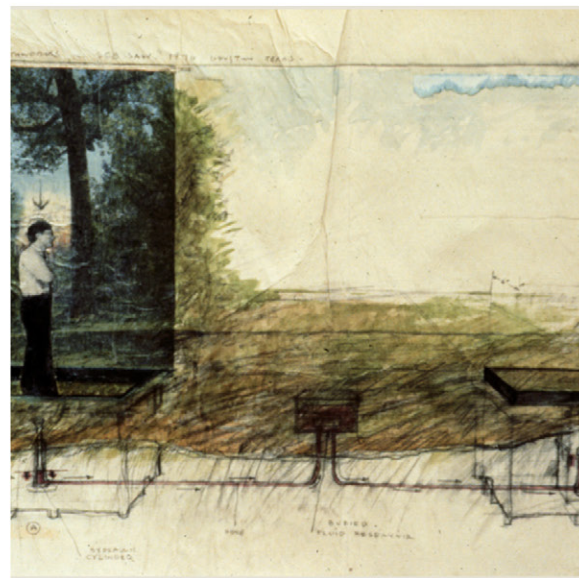


Human - NonHuman Collaboration Labs

A rapidly growing field where artists team up with scientist to pursue environmentally conscious art backed by scientific research has been developing. Our institute serves as a meeting grounds for 'Eco Art' and a medium for eco artists and scientists to continue their research, showcase their work, and engage with the public.



See Saw, Memorial Hermann Park. 1976
- Mel Chin



Wheatfield, Downtown Manhattan. 1982
- Agnes Denes



Revival Field, Pig's Eye Landfill Minnesota. 1991 -
Mel Chin



Slow Clean Up, Chicago. 2008-2012
- Francis Whitehead

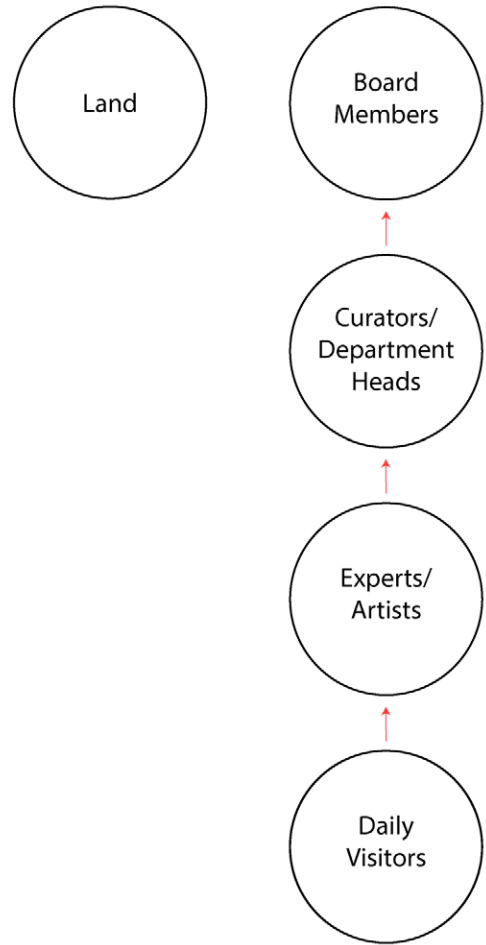


Extinct In New York, NY. 2019
-Michael Wang

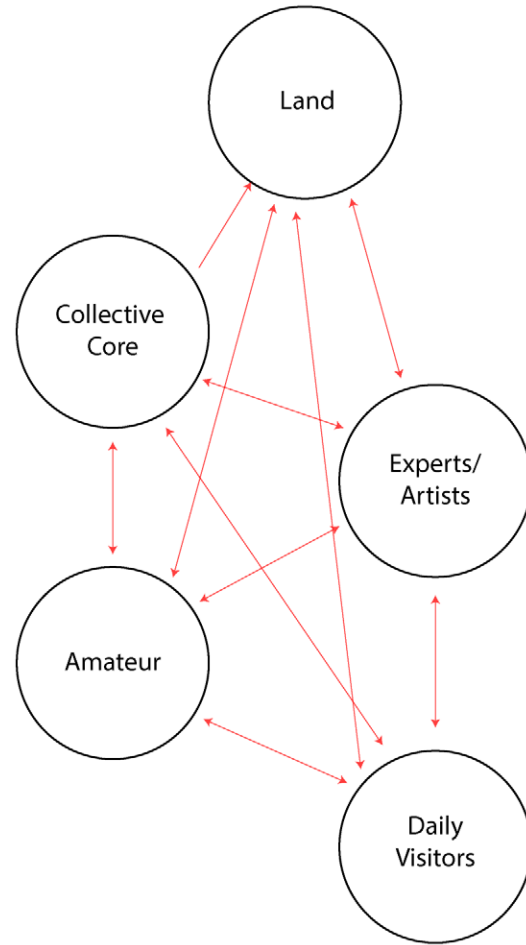
Located in the North West Side of Fifth Ward, the site is characterized by its industrial use and adjacency to the railroad line. A site that once used to be an oil storage facility, now remains as an empty parcel of contaminated land overtaken by flora and fauna. The Human Non-Human Collaboration Laboratory is a participatory research institute with the intent of developing new methodologies for remediating the land through the experimentation of phytoremediation and similar ecological methods. Artists are introduced into the mix of ecological scientists to develop a more public facing approach. A patchwork of immersive environments and open landscapes housed under participatory experimentation halls offer visitors a deeply rooted encounter with remediation efforts forming a revitalized relationship to their environment. Collaboration methods between humans and non-humans form a protected commons where plant scientists, artists, neighboring residents, and non-human organisms all participate in the remediation process.



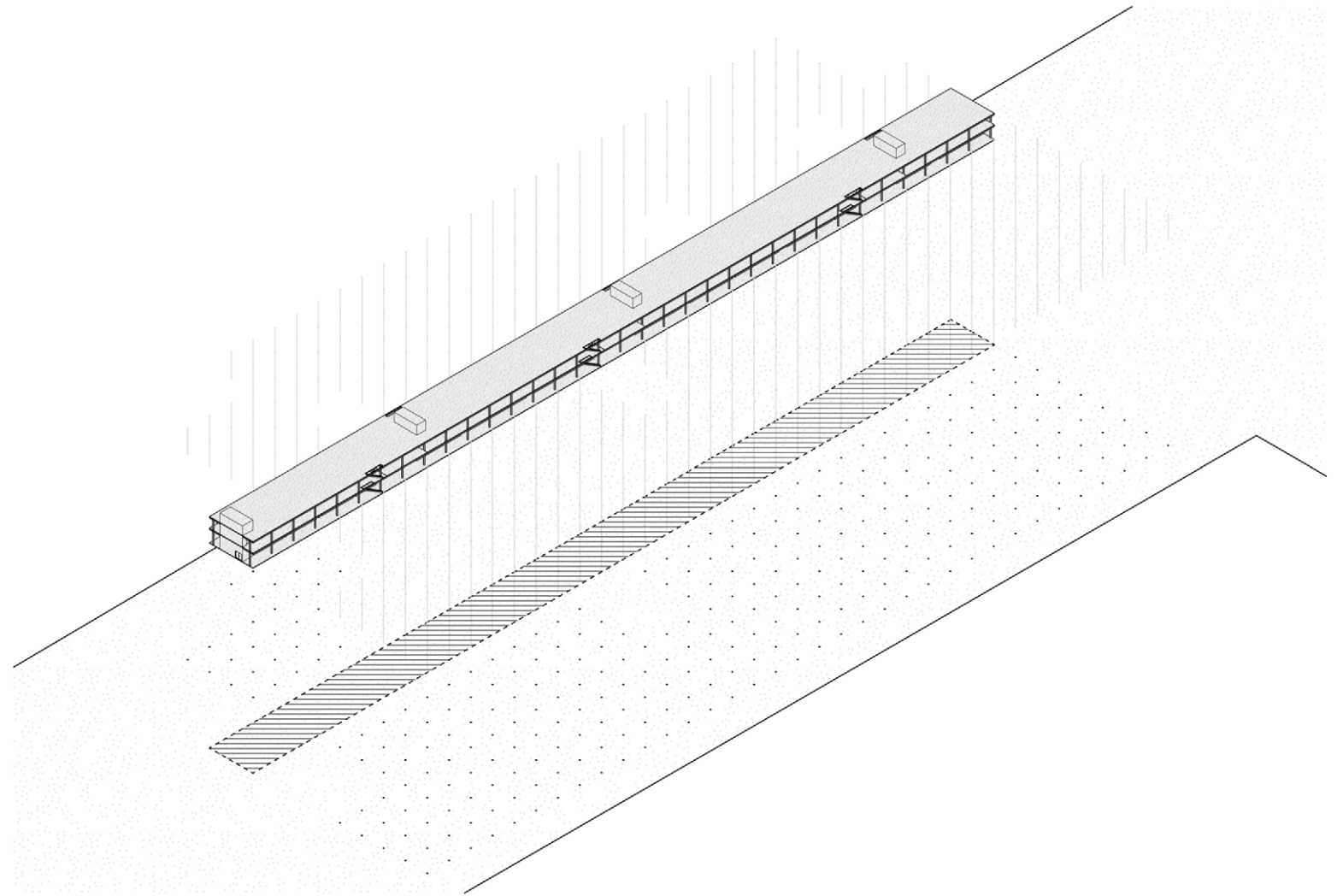
As opposed to traditional hierarchies and social structures where a “chain of command” is practiced, the collective forms reciprocal relationships between all the groups associated with the site. The site gains legal status as a person and leases itself to its end users for the purpose of remediation. The collective is then incentivized to maintain a minimum footprint by compacting the spaces supporting the transient experimentation halls and exhibits into a long thin core

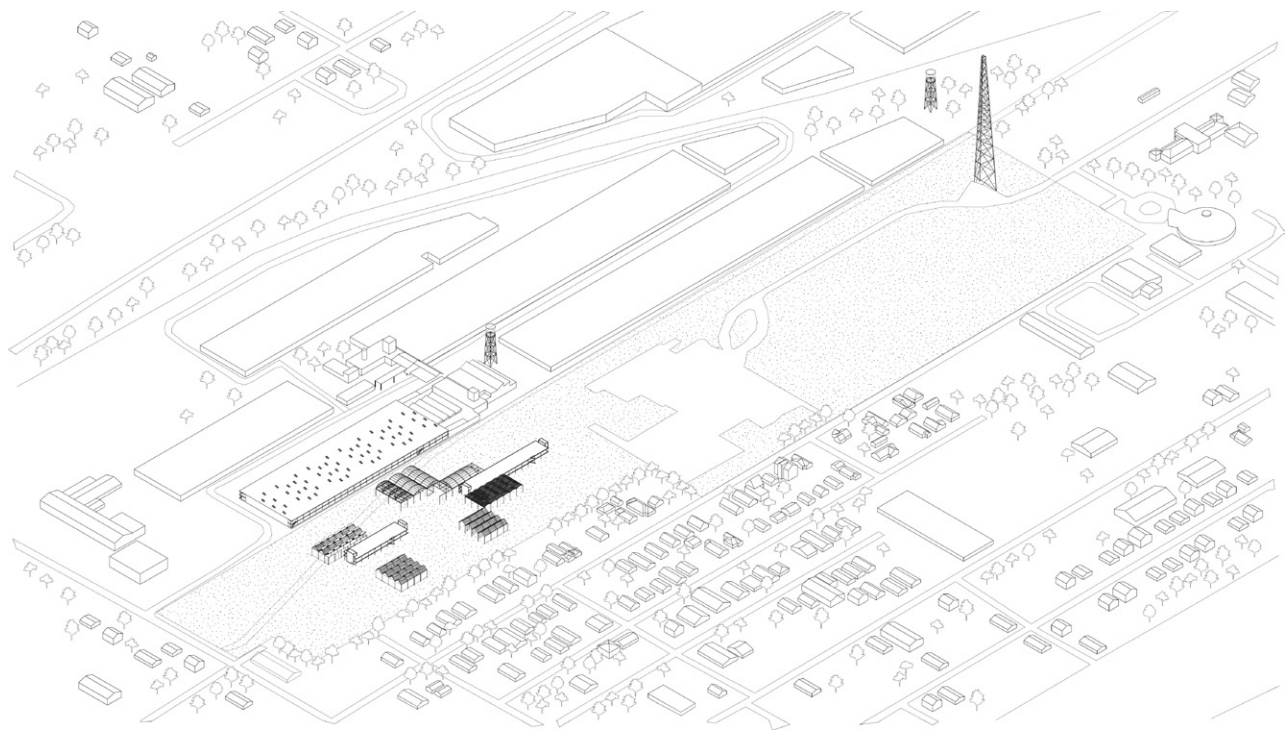


Traditional Social Structure

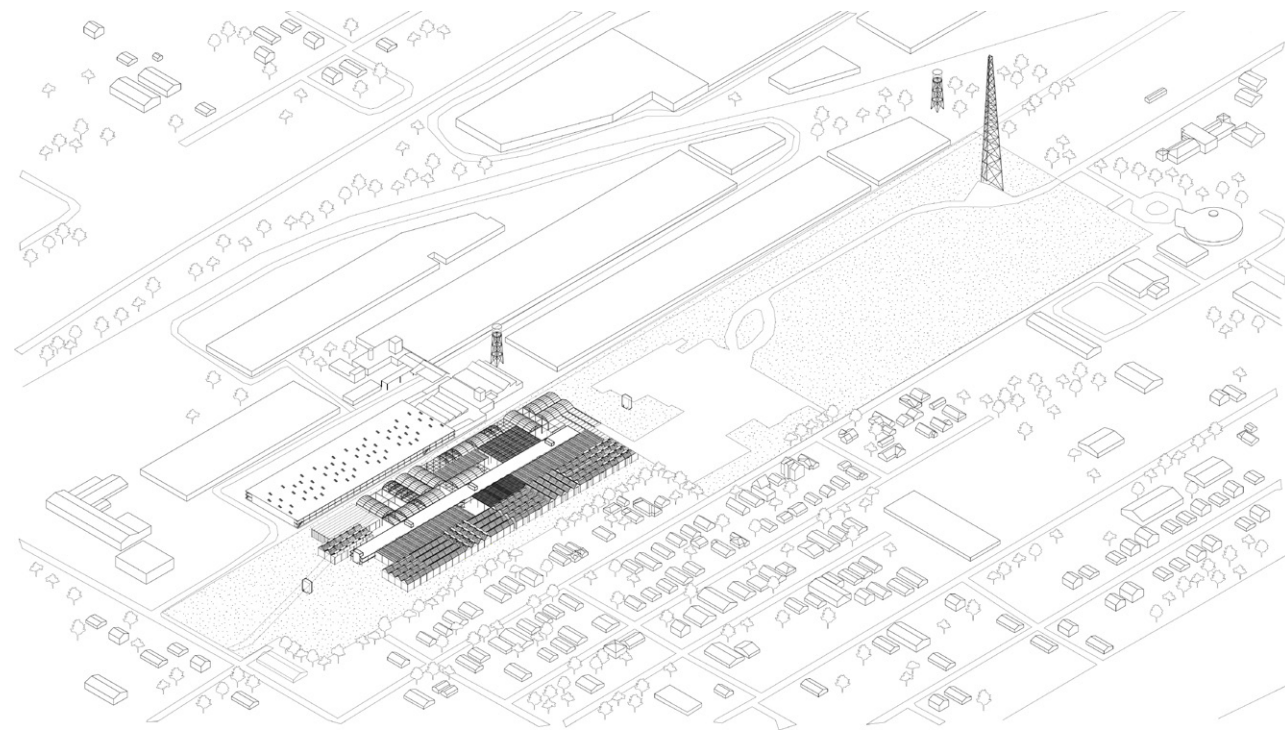


Collective Intelligence

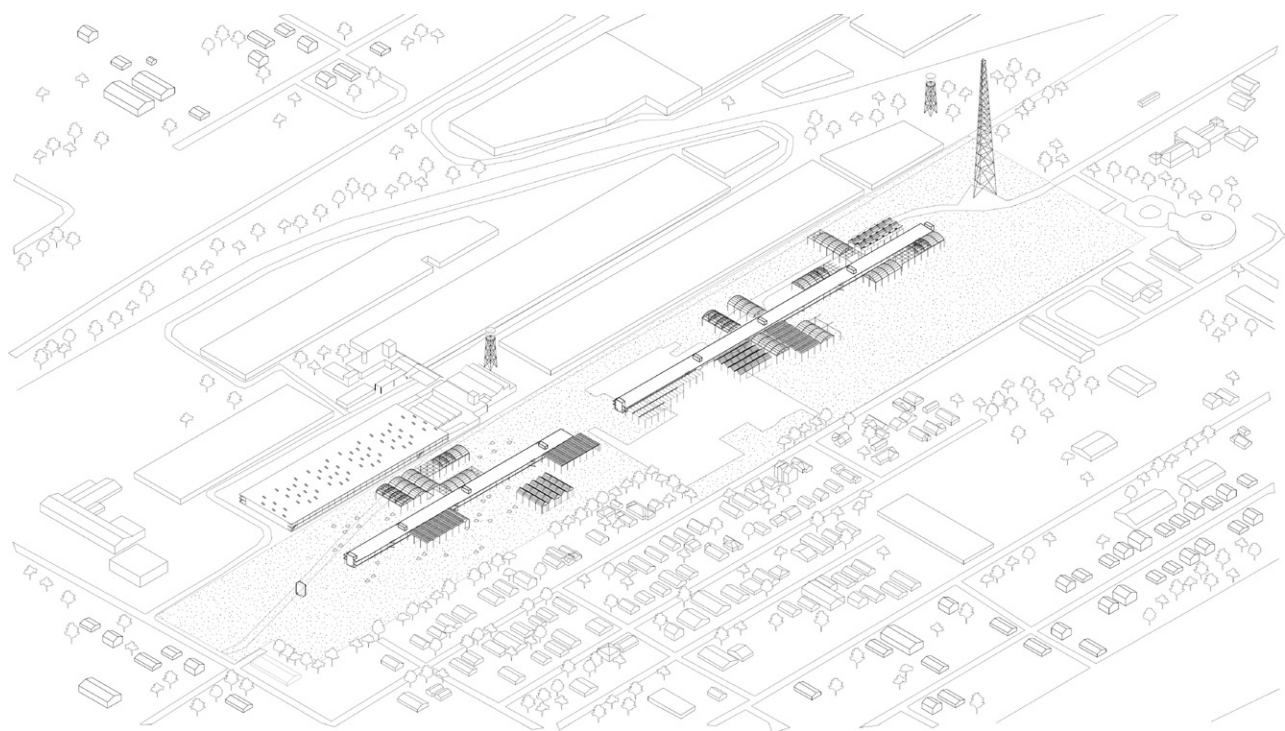




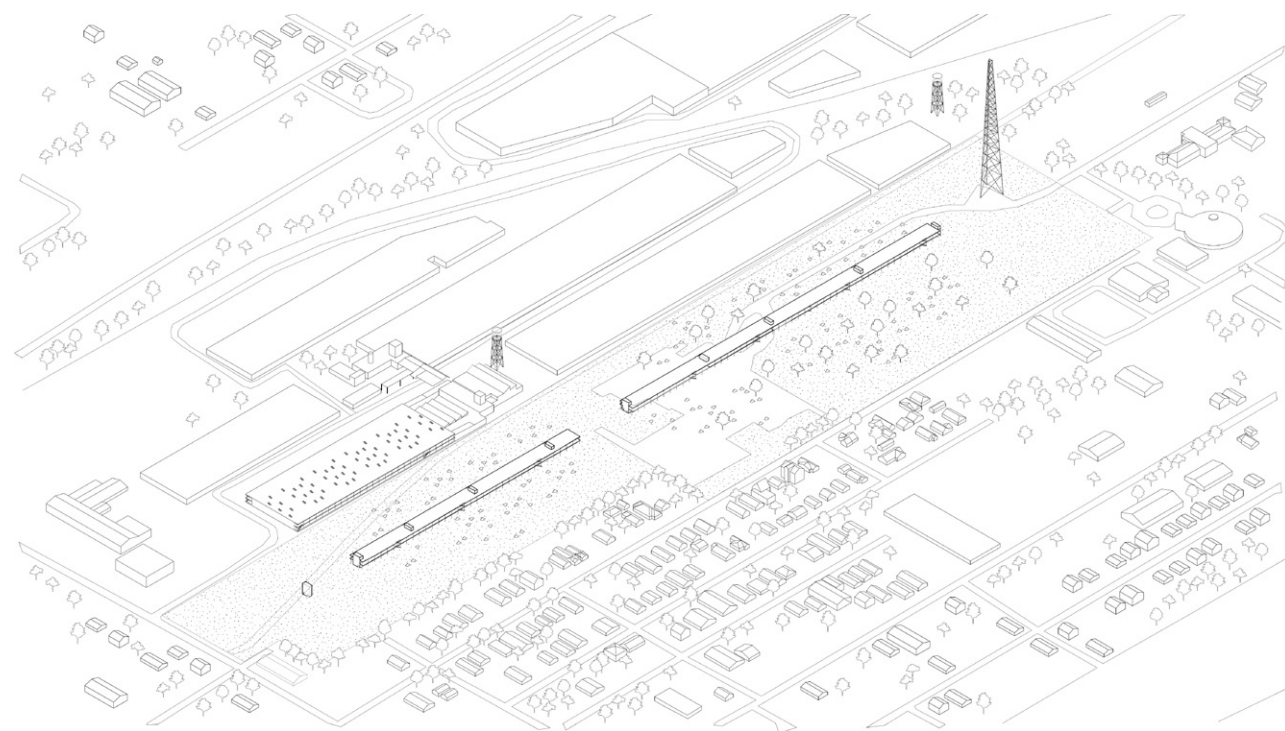
Phase 1



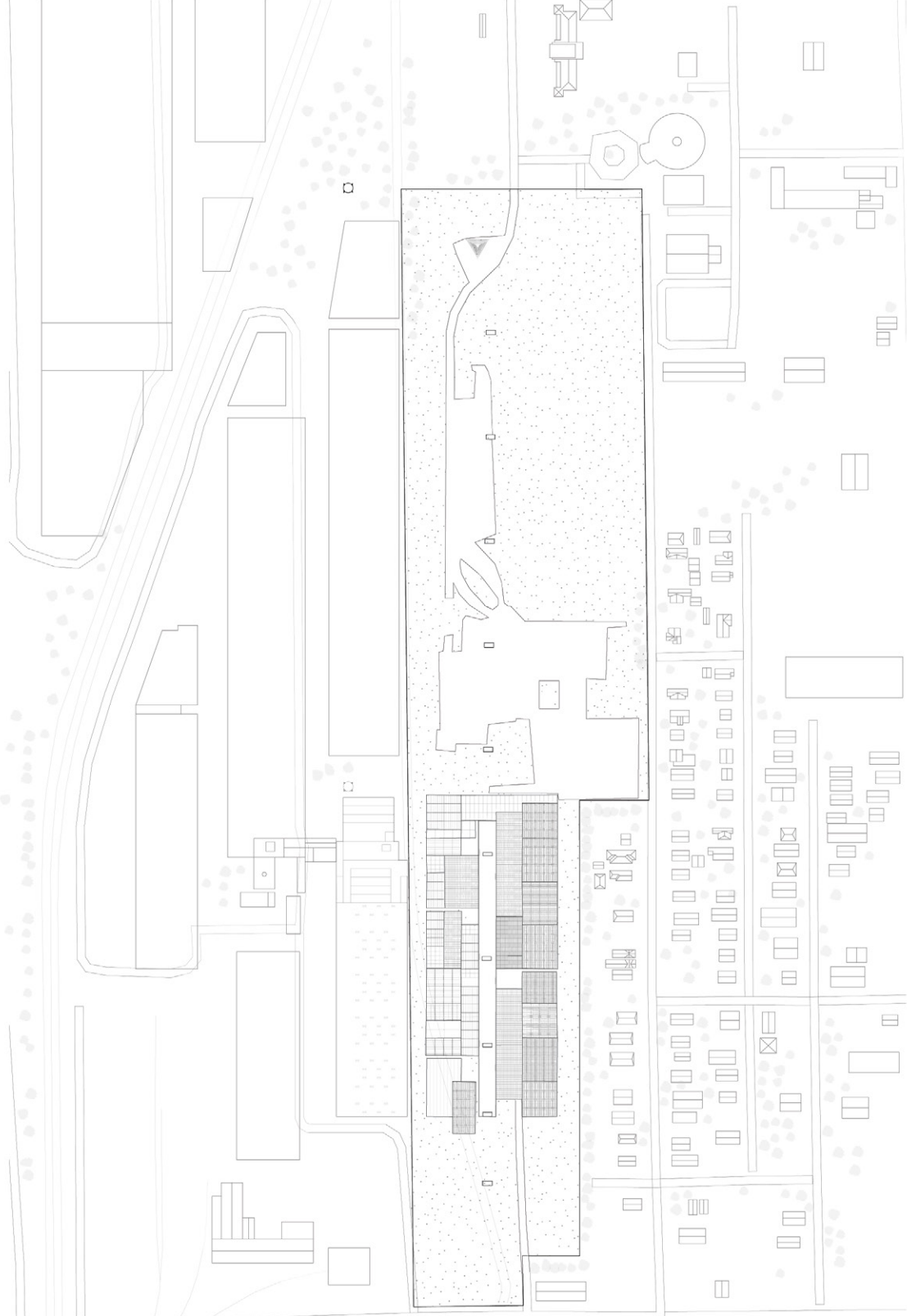
Phase 2



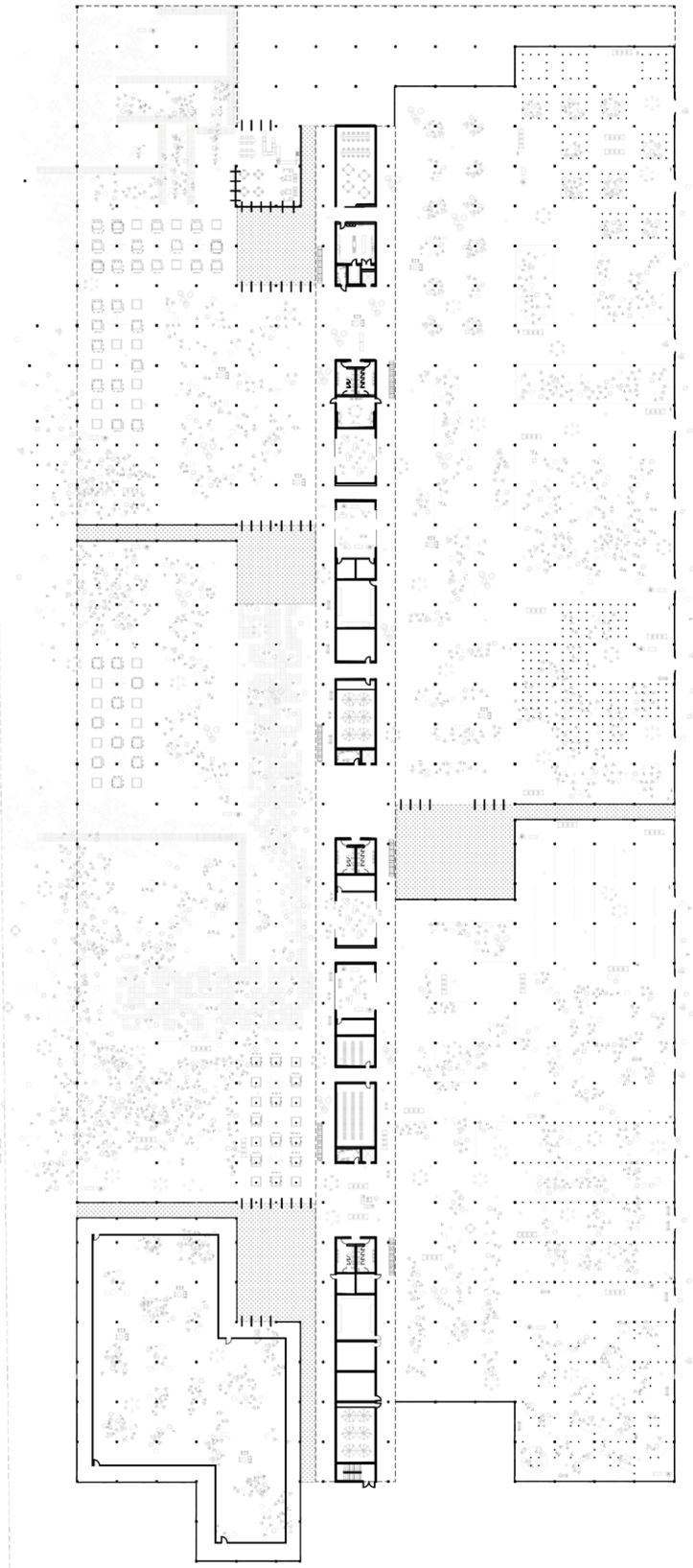
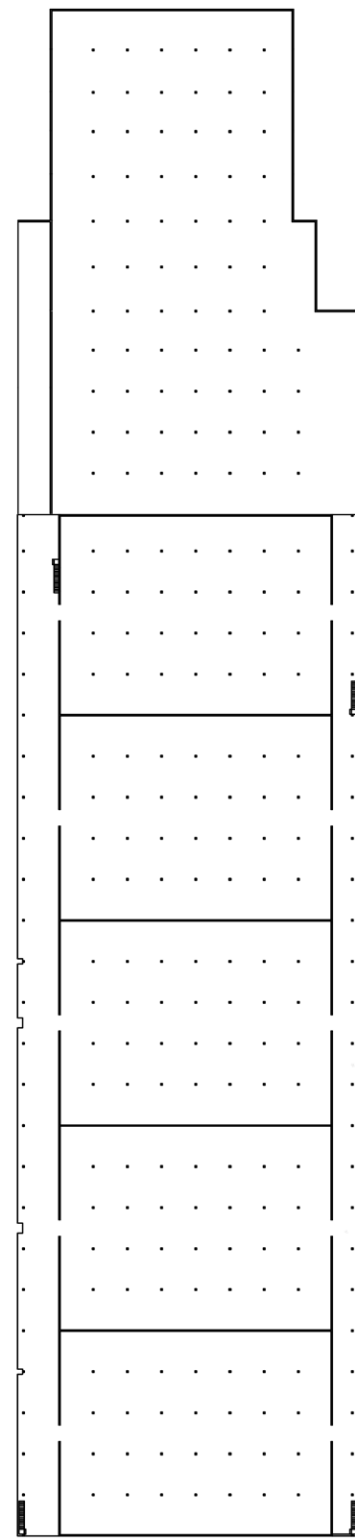
Phase 3



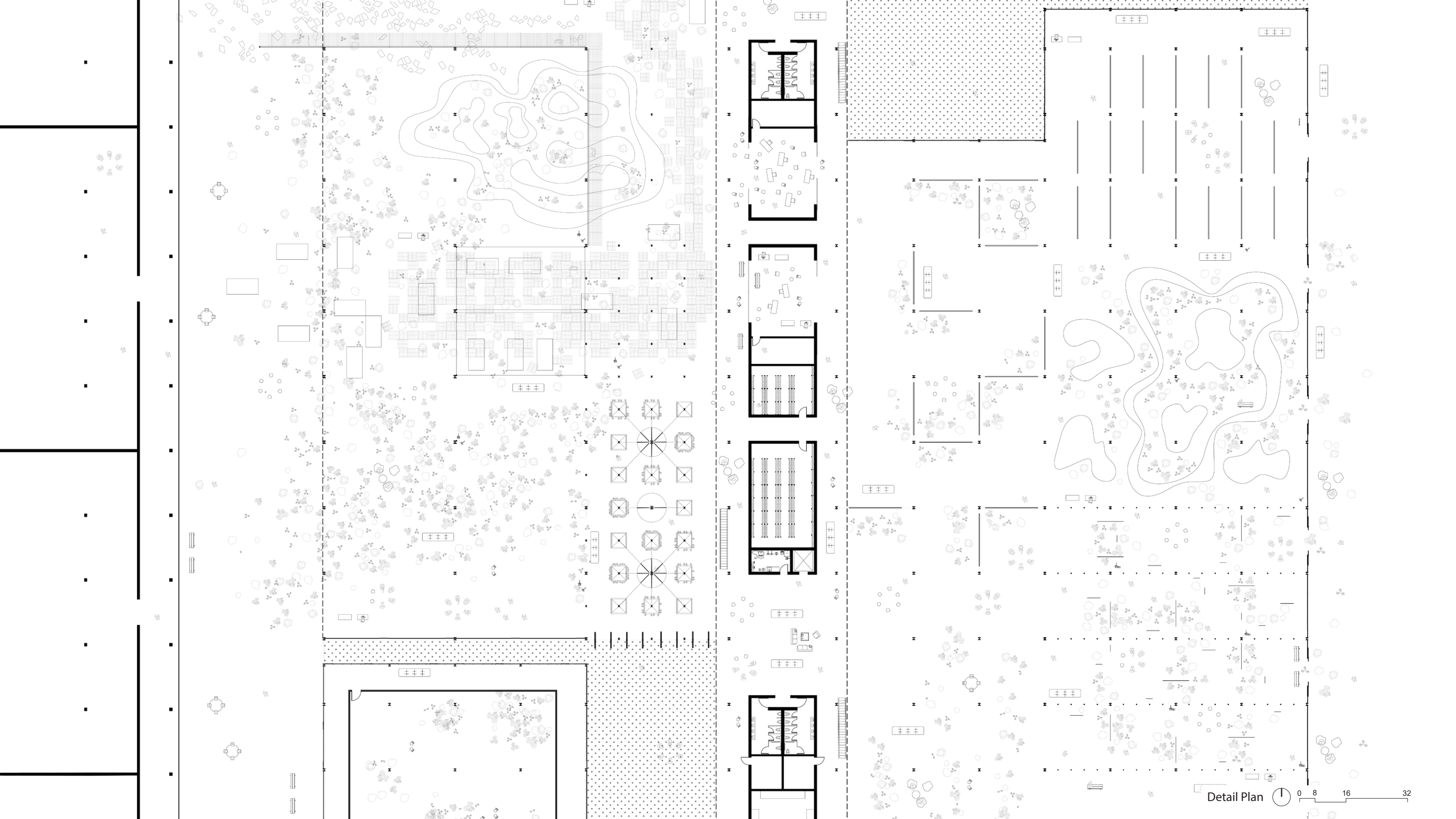
Phase 4

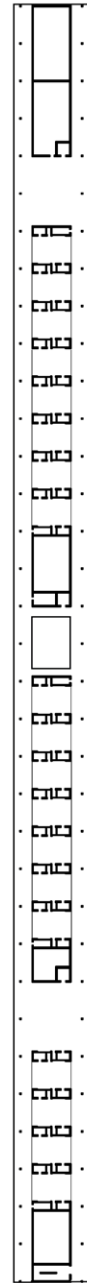
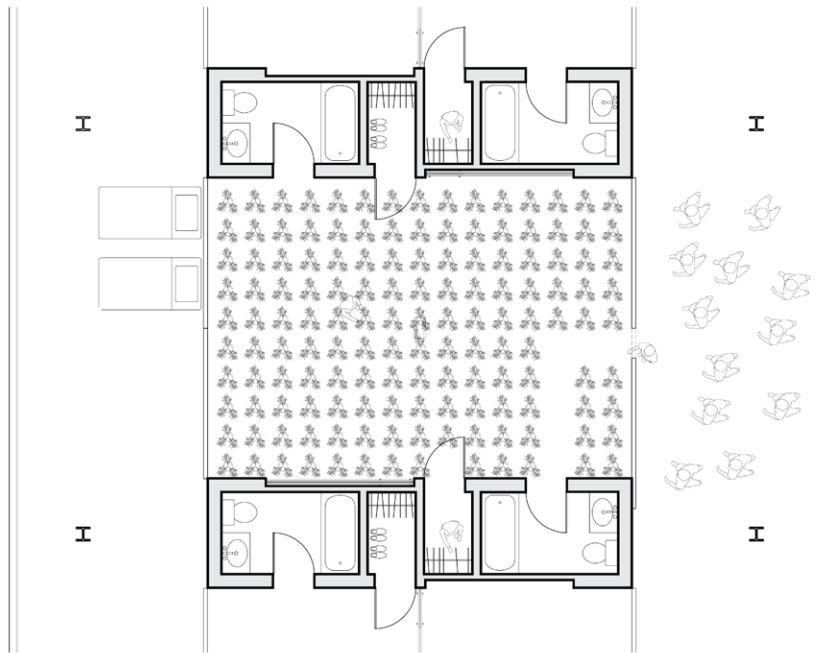
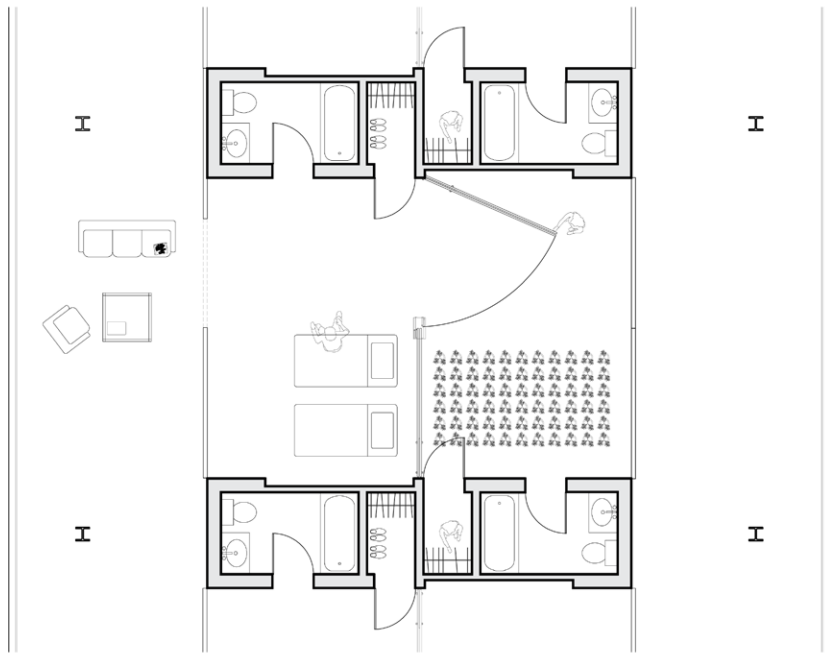
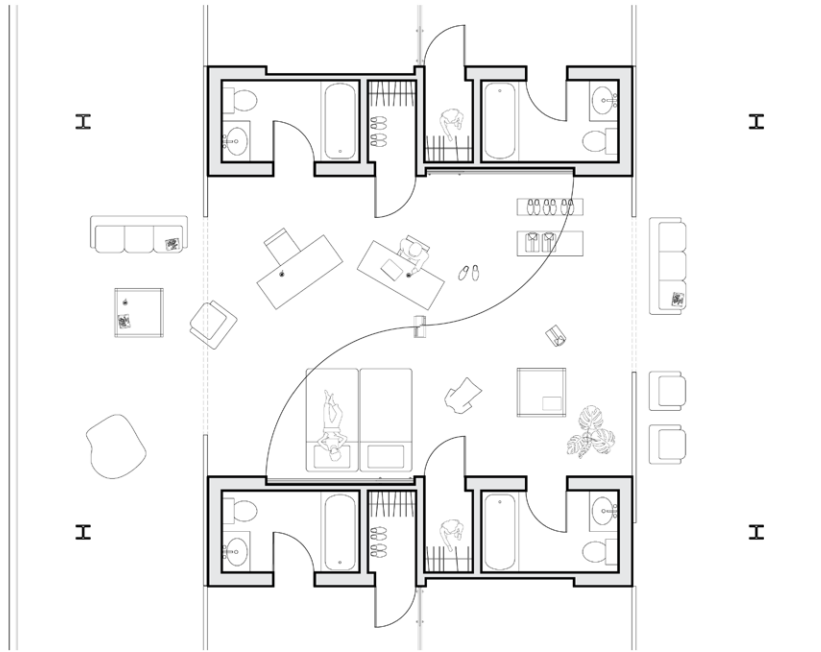
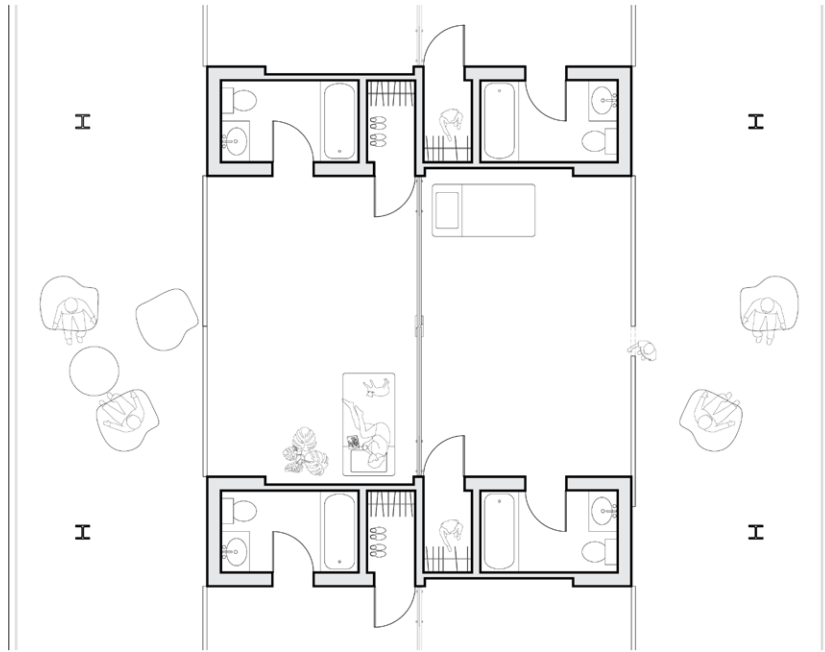


Site Plan 0 64 128 256



Ground Level Plan 0 32 64 128





Detail Residence Dwellings 0 2 4 8

Second Level Plan 0 32 64 128

OPEN LICENSE AGREEMENT

THIS OPEN LICENSE AGREEMENT IS BETWEEN ANY PERSON(S) WHO USES THIS INFORMATION AND CONSISTS OF THE TERMS AND CONDITIONS FOUND ON PG 1.

PROTOTYPE: MIST HALL 50X50 SF AREA (4X 25' BAYS)

ABSTRACT:

THE PRESENT DEVICES PROVIDES THE USER WITH METHODS TO INVESTIGATE AND EXPERIMENT WITH THE HUMIDITY OF A 60,750 FT³ SPACE. ADDITIONAL PLUG INS AND ADD ONS THAT MAY ENHANCE THE CONTROL OF WATER OF THE IMMEDIATE ENVIRONMENT ARE INCLUDED AS WELL.

- A MISTING DEVICE CAPABLE OF SELECTIVELY SPRAYING A FLUID MIST TO COOL AND/OR TO ADD HUMIDITY TO AN AREA AFFECTING HUMANS AND NON-HUMANS TO PROMOTE HEALTH AND WELLNESS OF THE HUMAN/NON-HUMAN.
- 40PSI - 1500+ PSI MISTING SUPPLY

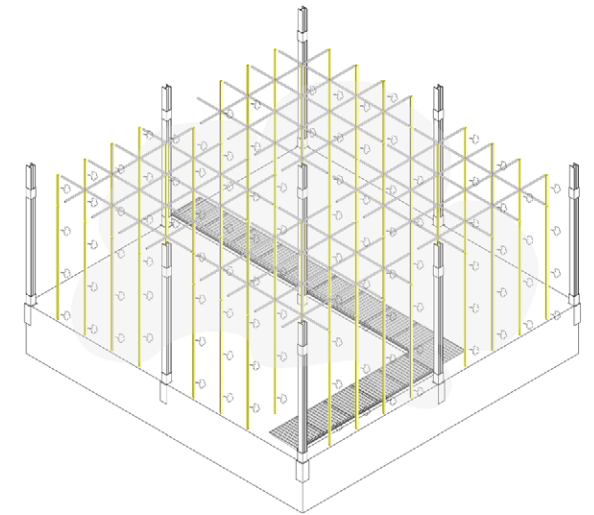
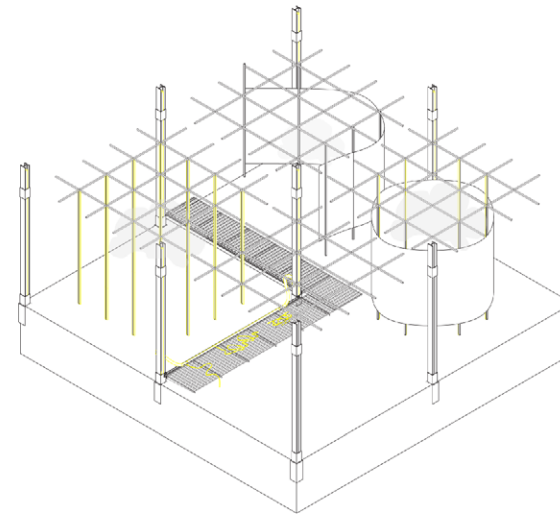
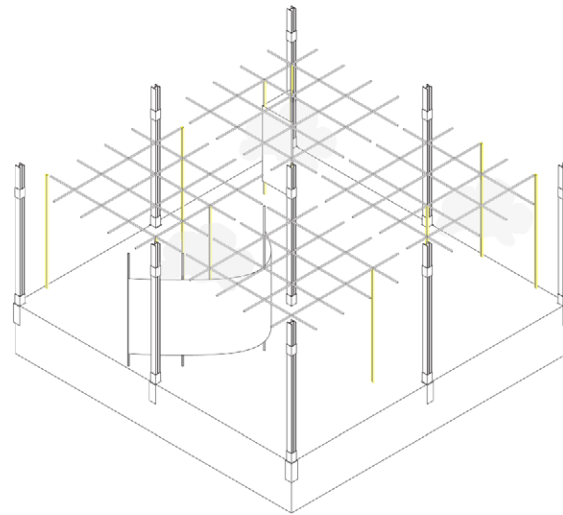
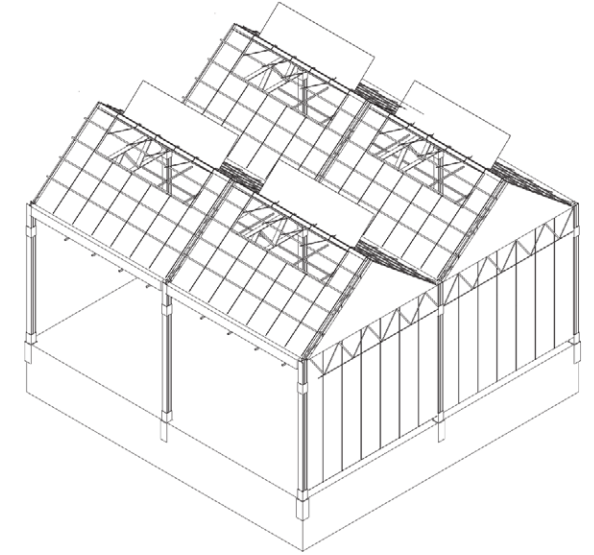
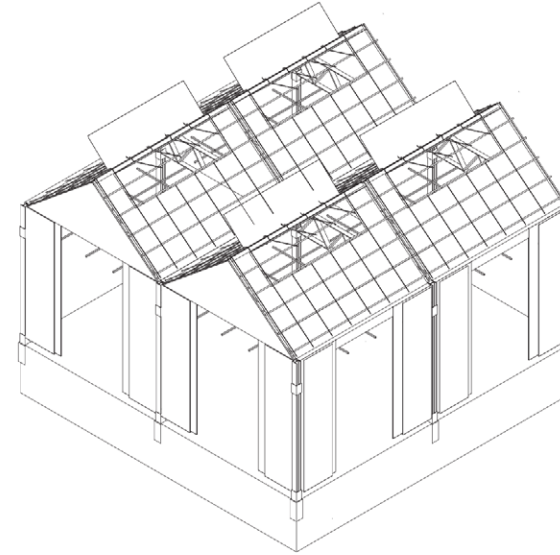
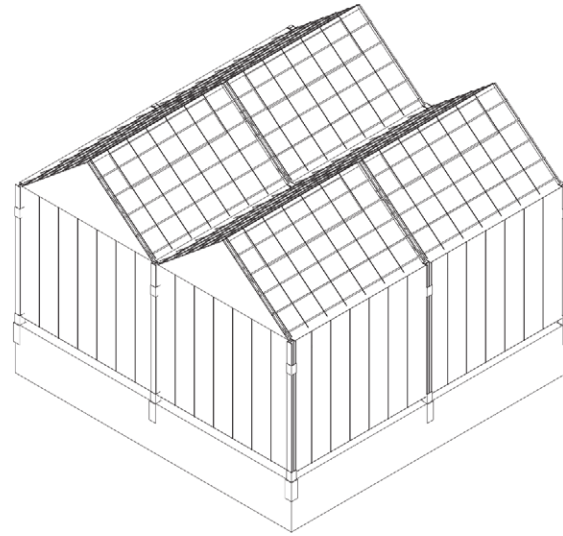


45 - 500 NOZZLES



9 - 102 4-WAY NOZZLES

MIST HALL 2



OPEN LICENSE AGREEMENT

THIS OPEN LICENSE AGREEMENT IS BETWEEN ANY PERSON(S) WHO USES THIS INFORMATION AND CONSISTS OF THE TERMS AND CONDITIONS FOUND ON PG 1.

PROTOTYPE: LIGHT HALL 50X50 SF AREA (4X 25' BAYS)

ABSTRACT

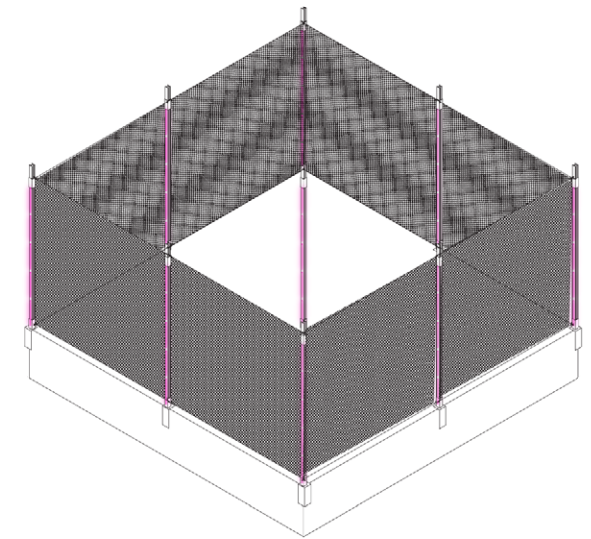
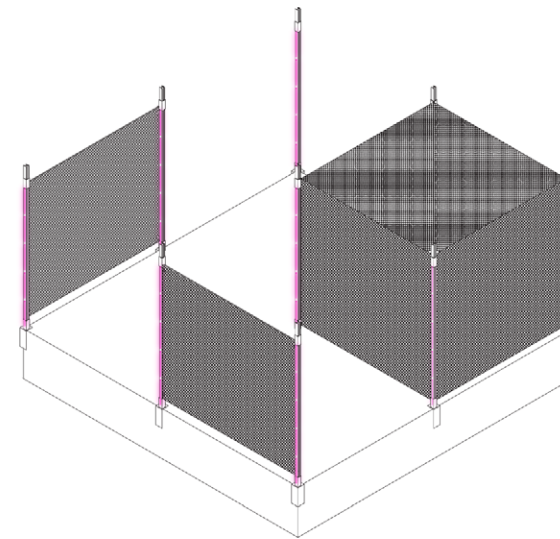
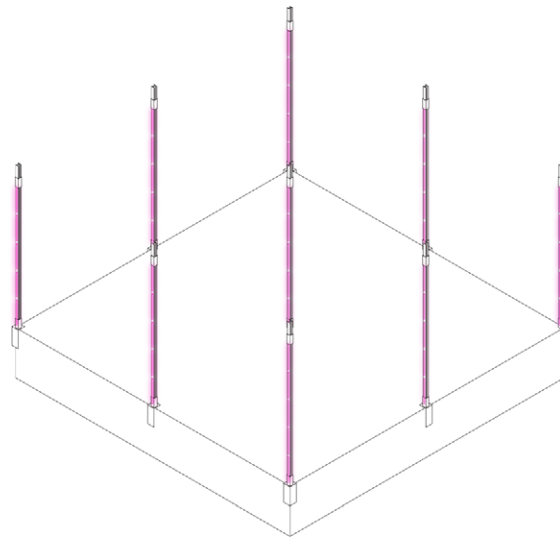
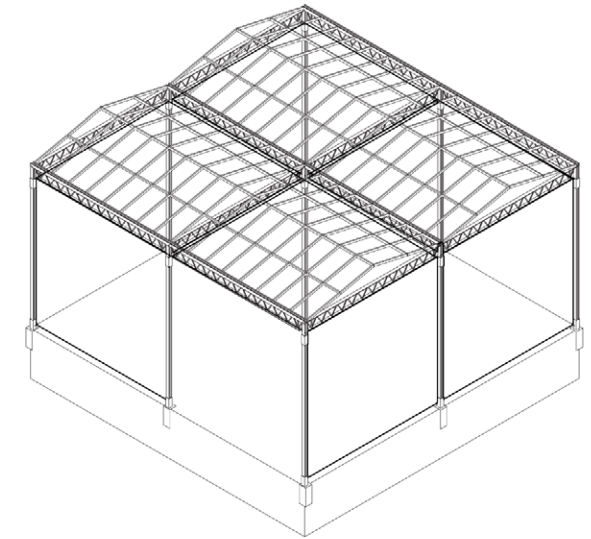
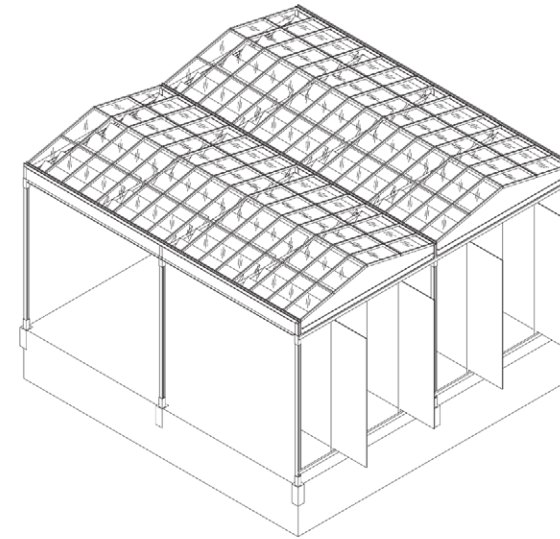
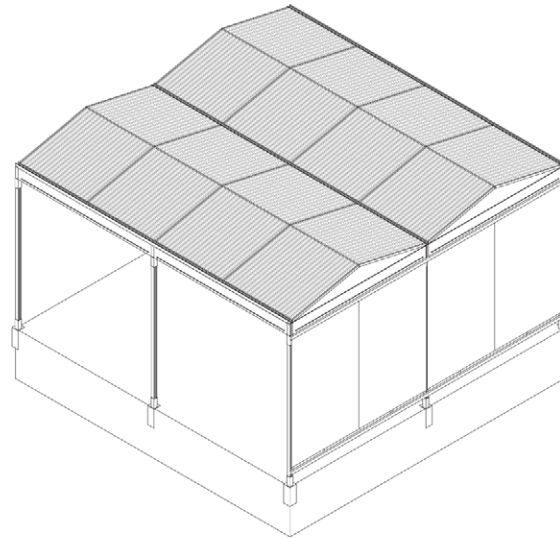
THE PRESENT DEVICES PROVIDES THE USER WITH METHODS TO INVESTIGATE AND EXPERIMENT WITH ELECTROMAGNETIC RADIATION IN A 60,750 FT³. ADDITIONAL PLUG INS AND ADD ONS THAT MAY ENHANCE THE CONTROL OF LIGHT OF THE IMMEDIATE ENVIRONMENT ARE INCLUDED AS WELL.

LIGHTING DEVICES: 30 WATTS (2600 LUMENS) LED LIGHT SOURCE. THE PINK LIGHT IS PRODUCED FROM A MIXTURE OF BLUE AND RED LIGHT. BLUE LIGHT IS DIRECTLY RELATED TO CHLOROPHYL PRODUCTION. RED LIGHT IS RESPONSIBLE FOR THE GROWTH OF FLOWER AND FRUITS. THE MANIPULATION OF THESE TWO WAVELENGTHS AND OTHER WAVELENGTHS MAY YIELD OTHER FINDINGS.



18 - 90 LIGHTS

LIGHT HALL 2



OPEN LICENSE AGREEMENT

THIS OPEN LICENSE AGREEMENT IS BETWEEN ANY PERSON(S) WHO USES THIS INFORMATION AND CONSISTS OF THE TERMS AND CONDITIONS FOUND ON PG 1.

PROTOTYPE: GROUND HALL 50X50 SF AREA (4X 25' BAYS)

ABSTRACT

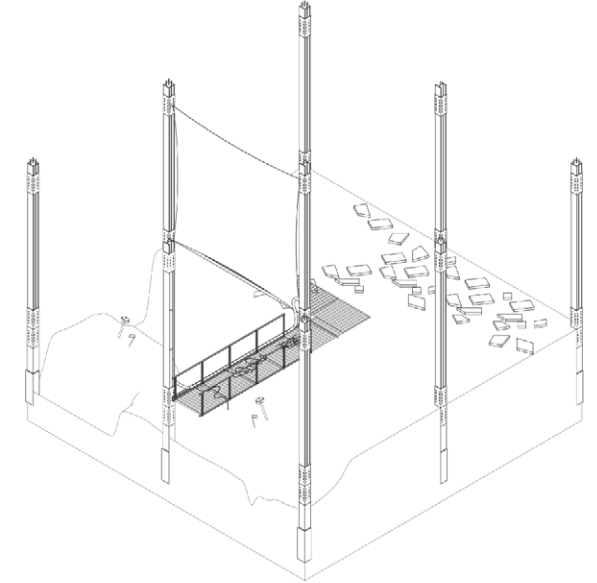
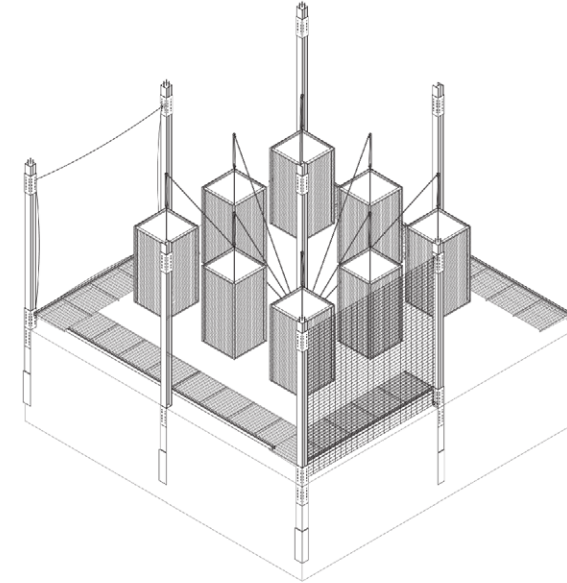
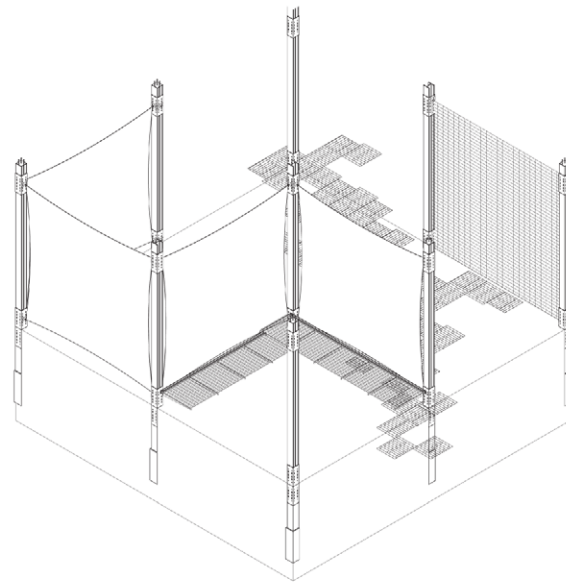
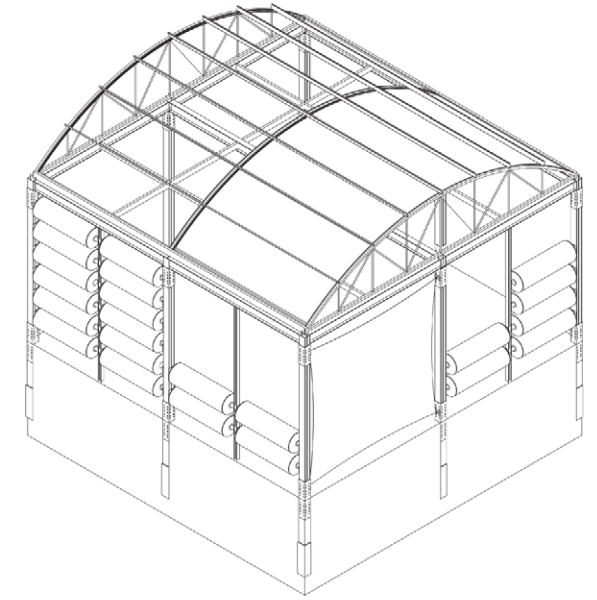
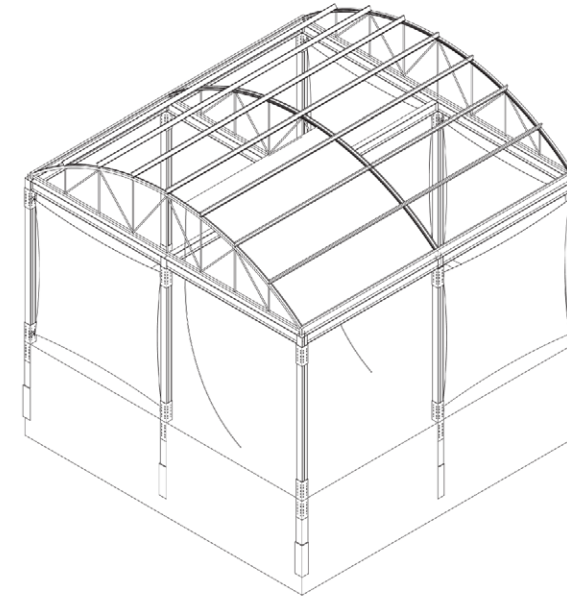
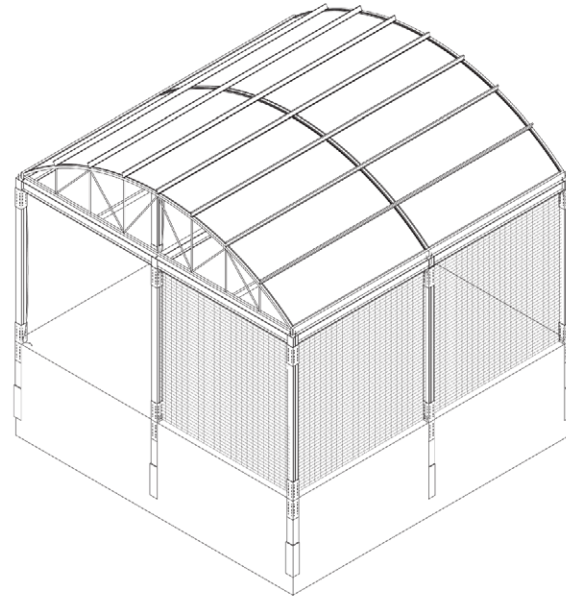
THE PRESENT DEVICES PROVIDE THE USER WITH METHODS TO INVESTIGATE AND EXERIMENT WITH THE GROUND CONDITION OF 39,000 FT³ AND ITS CONNECTION TO ITS IMMEDIATE ENVIRONMENT.

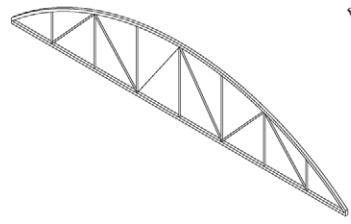
GROUND DETECTING DEVICES: PROTOTYPE 1 DETECTS METALS FOR 25 SF AREA OF GROUND 15 FT DEEP.



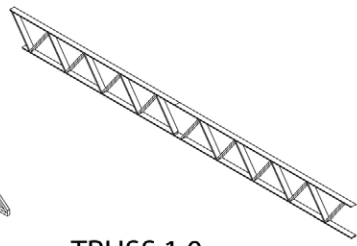
104 DETECTORS

GROUND HALL 2

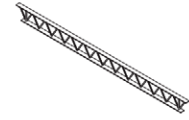




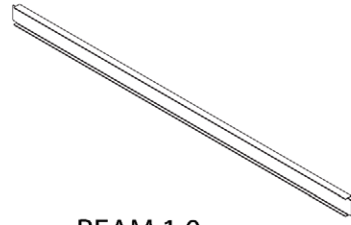
ARCH TRUSS 1.0



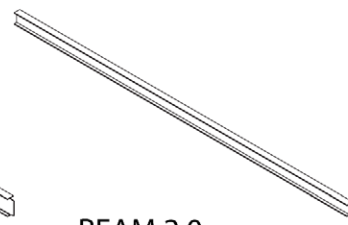
TRUSS 1.0



TRUSS 2.0



BEAM 1.0



BEAM 2.0



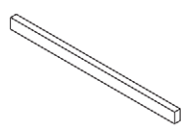
BEAM 3.0



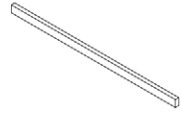
BEAM 4.0



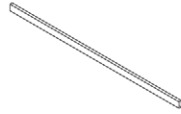
BEAM 5.0



BEAM 6.0



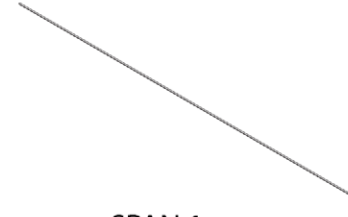
BEAM 7.0



BEAM 7.1



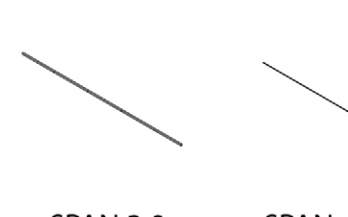
CURVED SPAN 1.0



SPAN 1



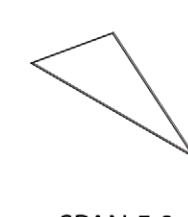
SPAN 2.0



SPAN 3.0



SPAN 4.0



SPAN 5.0



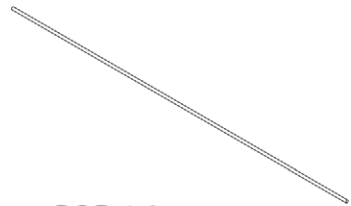
SPAN 6.0



SPAN 7.0



PINK LT 1.0



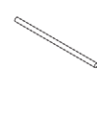
ROD 1.0



ROD 2.0



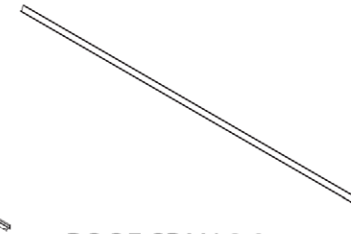
ROD 2.1



ROD 3



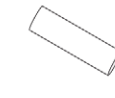
ROOF SPAN 1.0



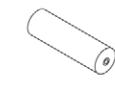
ROOF SPAN 2.0



ROOF SPAN 3.0



LOUVER 1.0



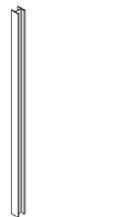
COMP. TMBL 1.0



GLSS. PNL. 1.0



G. P. 1.1



COL. 1.0



COL. 2.0



COL. 3.0



COL. 4.0



W.C. 1.0



W.C. 1.2



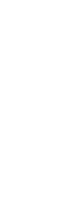
W.C. 1.3



W.C. 1.4



POLY CON. 1.0



COL. CON. 1



COL. CON. 1.1



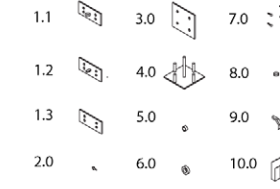
COL. BS. 1.1



COL. BS. 1.0



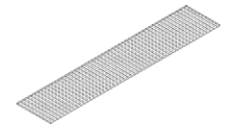
COL. BS. 2.0



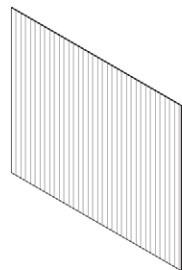
SM CONNECTIONS



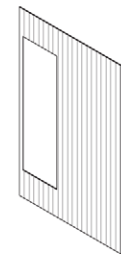
WATER HOSE 1.0



GRATE 1.0



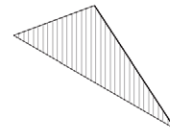
POLY PNL. 1.0



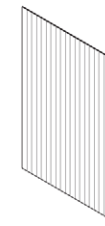
POLY PNL. 2.0



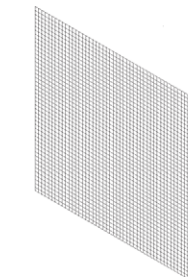
POLY PNL. 3.0



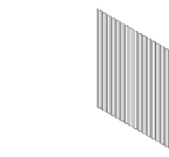
POLY PNL. 4.0



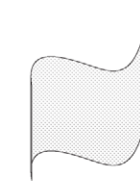
POLY PNL. 5.0



MESH 1.0



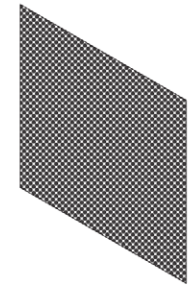
CORR. MTL. PNL. 1.0



FABRIC 1.0



FABRIC 2.0



FABRIC 3.0

A Living Construction Document: Each architectural component is catalogued and open sourced online. One can find further information such as material flows, carbon footprints, and other experimentation findings. This diagram shows the complex material relationships that form from the interchangeability of parts through-out the different exhibits and through time.

