

BTI Institute

Borders • Trade • Immigration

A Department of Homeland Security Center of Excellence

Newsletter

July to September 2020 | Program Year 6 Quarter 1

IN THIS ISSUE
USCGA Internship
Tactical Mapping Research
Best University



BTI Institute Newsletter

A Department of Homeland
Security Center of Excellence

July to September 2020 | Program Year 6 Quarter 1

INSTITUTE STAFF

Anthony Ambler, Ph.D.
Director

Kurt Berens
Executive Director

Maura Pereira De Leon, Ph.D.
Senior Researcher

Philip Boedeker, J.D.
Manager, Communications and Outreach

Virginia Hernandez
Administrative Assistant

RESEARCH COMMITTEE

George Zouridakis, Ph.D.
Chair

Luca Pollonini, Ph.D.

Elaine Liu, Ph.D.

Richard Willson, Ph.D.

CONNECT WITH US



www.uh.edu/bti/



Company: Borders, Trade,
and Immigration



@BTI_UH

This document, along with everything we do, is dedicated to the men and women of the United States Department of Homeland Security. We thank them for their tireless efforts to secure our Nation and safeguard our economic prosperity by facilitating lawful travel and trade.



The cadets visited with staff from USCG Sector Houston-Galveston to gain operational perspectives from current officers within the Coast Guard.

BTI Summer Homeland Security Internship

US Service Academy Cadets

The BTI Institute hosted four cadets from the United States Coast Guard Academy from 5 July to 16 August 2020. The cadets were paired with a mentor for their research project and briefing. The cadets stayed on the University of Houston campus and conducted their research either in person or remotely. In addition to their research projects, the cadets toured USCG Sector Houston-Galveston, Space Center Houston and the NASA Johnson Space Center, and other Houston attractions.

For more on the 2020 Internship or previous years, visit <https://uh.edu/bti/education/Internships/>



Jackson T. Carpenter



Erin Schultz



Oliver Simon



S. June Wenzel

Internship Projects



Drill – Actions Upon Alert to Suspicious Item (Possible IED/VBIED)

Task: Organize security and response efforts when faced with a possible IED/VBIED threat.

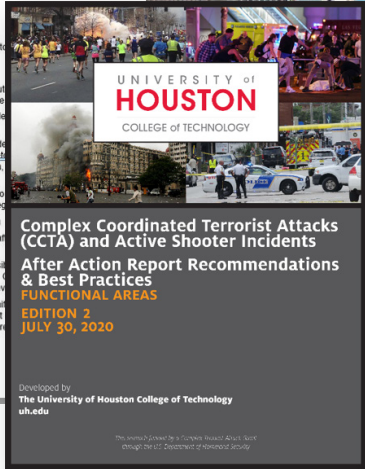
Condition: Given a situation where faced with possible detonation of an Improvised Explosive Device (IED) and/or Vehicle-Borne Improvised Explosive Device (VBIED) in an area or location where civilians and bystanders are present.

Bomb Techs/Bomb Squad may be requested but are not on-scene.

Standards: Upon arrival at the incident scene, conduct size-up, establish incident command, secure the crime scene, and organize response.

Performance Measures:

1. Conduct Size-Up (assessment of the situation)
2. Establish Incident Command. Move Incident Command Post to provides cover and stand-off from effects of IED/VBIED.
3. Limit use of cellular telephones by responders.
4. Designate an initial inner perimeter (stand-off distance computed from the DHS Bomb Threat Standoff Chart) to control access to the target area.
5. Based upon the situation, responding officer(s) should consider possible actions:
 - Deploy officers for surveillance and force protection outside perimeter or accomplices may be prepared to remotely detonate device or secondary explosive devices planted in the area, secondary attack on responders following the detonation.
 - Establish roadblocks or enact other containment options to movement or escape of suspects as well as ingress and egress.
 - Divert pedestrian and vehicular traffic from the target area.
 - Request a no-fly zone for helicopters and other light aircraft within radius of the target location.
 - Direct as many civilians out of the inner perimeter as possible means reasonable possible to avoid alerting the suspect. Be aware of possible attempts by adversaries to join in with evildoers.
 - Ensure selection of separate standoff staging areas for uniformed responders and medical personnel and provide their exact communications. If the suspect is presumed to be unaware



Jackson T. Carpenter, Cadet 1/c, USCGA

Research Mentor: Kevin Clement, Executive Director of Strategic Partnerships, University of Houston College of Technology

Project: Complex Coordinated Terrorist Attacks and Active Shooter Incidents

Focus: The project focused on after-action review (AAR) recommendations and processes that can be built based on the lessons learned from those reviews. Cadet Carpenter was involved in developing drill cards, a document that walks emergency responders through action steps based on the current emergency and conditions, such as receiving a call about a suspicious package.

“AARs allow the identification of common themes across different incidents that can provide honest, objective, and organized recommendations to improve organizational responses,” said Carpenter during his project brief.



JANUARY 27, 2017

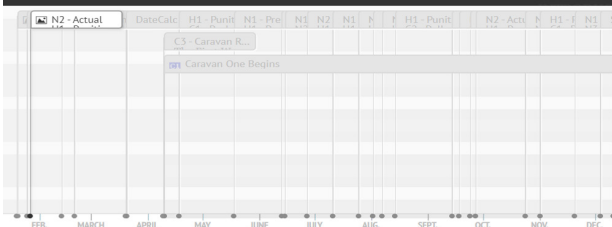
N2 - ACTUAL
H1 - PUNITIVE
C1 - PUSH

SECOND EXECUTIVE ORDER ISSUED

President Trump issues executive order to temporarily limit refugee admission and immigration bans from the Middle East



N3 - PROPOSED
H2 - PUNITIVE
C2 - PULL
C4 - POLICY REACTS TO CARAVANS



Erin Schultz, Cadet 1/c, USCGA

Research Mentor: Gary Hale, Voir Dire International, LLC

Project: ArcGIS Analysis of Migrant Caravans from the Northern Triangle Countries

Focus: The project studied the impact of U.S. and Mexico immigration policies as related to the caravan phenomenon. Migrant caravans originating in Central American countries south of Mexico were not seen before 2017. The caravans were configured as a collective, simultaneous and organized movement of thousands of people, for which the U.S. and Mexican governments were not prepared to process. The project looked to caravans as a whole, not just as individual migrant trends, and the factors that contribute to the formation of a caravan.

“We were not looking at individual push-pull factors, individual people, or why [the individual] would be immigrating to America. It was much more about the caravan and its formation,” said Schultz during her project brief.

Oliver Simon, Cadet 1/c, USCGA

Research Mentor: Kevin Clement, Executive Director of Strategic Partnerships, University of Houston College of Technology

Project: Maritime Port Resilience

Focus: The project focused on creating a regional maritime disaster resilience action plan. While there is currently a national resilience framework, that framework lacks focus pertaining to the complexity of the maritime port. Cadet Simon conducted sixteen interviews with port directors and leadership to focus on the threats associated with maritime ports. Through those interviews, a threat list was developed that includes natural hazards (climate change, health), technological hazards (cybersecurity), and man-made threats (terrorism, funding).



“Economic competition and the majority of commerce in trade is focused on the maritime sector. With that comes trillions of dollars in trade and even the smallest incidents at a port can have a billion-dollar impact,” said Simon during his project brief.

| Recommended Action | References | Parties of Interest | Implementation Action | Policy Feedback | |
|---|--|---|--|--|--|
| NIL. EXERCISES, EDUCATION AND TRAINING | | | | | |
| Short-Term | | | | | |
| 5 | Develop and conduct targeted workshops to discuss response and restoration for challenging scenarios that will require specialized scientific and technical expertise, for example a chemical, radiological or nuclear incident or bio-attack. | Policy: Emergency Planning and Community Right-to-Know Act National Incident Management System (NIMS) Region 3 Area Contingency Plan Sector HR Maritime Severe Weather Contingency Plan 33 CFR 105.220 | Lead Agency: -POV Maritime Incident Response Team (MIRT) External Partners: United States Coast Guard, Norfolk Police Department, Norfolk Fire Department Internal Partners: Port Authority of Virginia, Virginia Pilots Association, Tow Boat U.S. | Search and Rescue Forum Annual Fire Fighting Symposium Mid-Atlantic Dive Forum Tactical Operators Boat Course | There is a need for better coordination and communication with, and education of, local representatives in responding to a large oil hazard incident where a Unified Command is in place. It was observed during this exercise that local representatives were concerned about how their issues and priorities would be acted on by the Unified Command. * Updates to the Area Contingency Plan should include a better description of the process for local communities to interact with the Unified Command during an incident. |
| Medium-Term | | | | | |

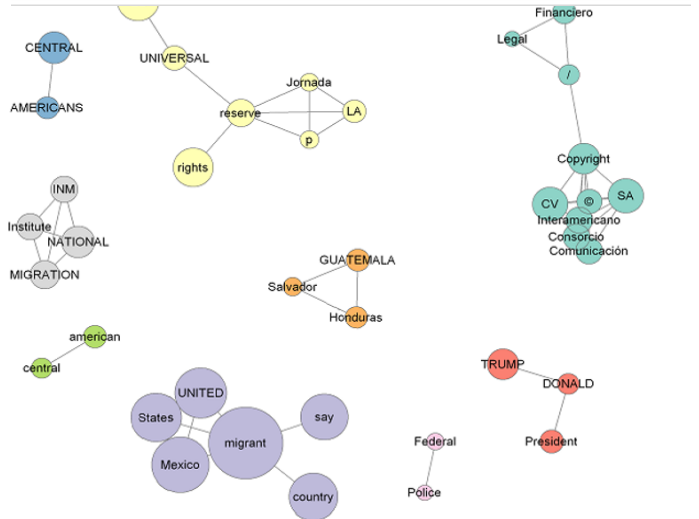
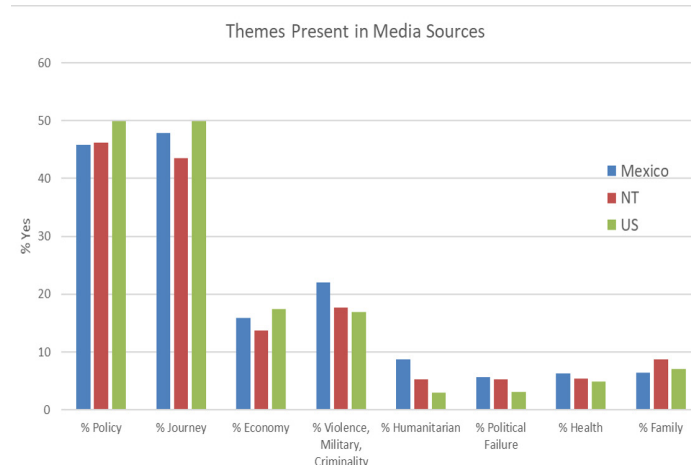
S. June Wenzel, Cadet 1/c, USCGA

Research Mentor: Skye Cooley, Ph.D., Assistant Professor of Strategic Communications, Oklahoma State University

Project: Intersecting Policy and Narrative: The Migrant Journey

Focus: The project focused on using narrative framework to inform U.S. policymakers of commonalities in the words used by national and international media to describe migration policy. By utilizing media sources from the U.S., Mexico, and Northern Triangle nations, the researchers sought to better understand the migrant narrative and its impact on policy development. Narrative themes were identified and compared across specific time periods based on U.S. immigration policy.

“The narrative policy framework can unite people’s narratives and take the subjective, qualitative data and make it into numeric, scientific information that we can actually analyze,” said Wenzel during her project brief.



Tactical Mapping of Border Security Impacts: El Paso Sector

The Challenge

Along the U.S.-Mexico border, decades of border security deployments have impacted the communities in the El Paso Sector in a variety of ways. Currently, no comprehensive visualization exists to understand the degree and manner of these impacts in areas such as public safety, public health, and economic growth. The goal of the project was to understand fully and comprehensively the impact of border security deployments, i.e., infrastructure and personnel, and the related policy changes, on socio-economic indices in the El Paso Sector. Without such comprehensive mapping, uncertainty and risk would impinge upon future operations, resource deployment, and risk-mitigation strategies.

The Solution

The proposed impact mapping would then have a tactical value. The 2020 Strategic Plan for Customs and Border Protection (CBP) states that in order to optimize the impact of its limited resources, e.g., personnel, technology, and infrastructure, on mission outcomes, CBP, and by extension, USBP, will utilize a risk-management strategy. This risk-management strategy prioritizes areas that pose a high-risk threat while CBP's strategic resource management framework informs decision makers on the optimal combination of resources to address high-risk areas.

Based on discussions with USBP, current strategic resource management framework would be strengthened by having information related to the impact that



Mayra Maldonado
Associate Director
Hunt Institute
University of Texas at El Paso

border security has had on border communities using historical mapping of resource deployments and regulations against social, demographic, and economic indicators. By leveraging additional data indicators to improve situational awareness, CBP and USBP will be able to build a comprehensive profile of the value and effectiveness of resource deployment.

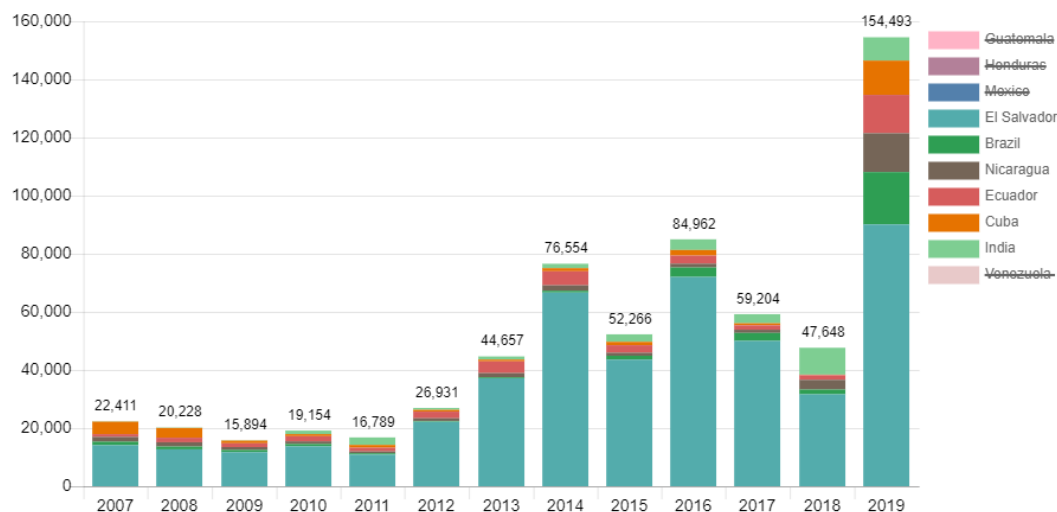
Furthermore, the data used to build the tactical mapping will also inform the future border security deployments to maximize the return on investment based on estimates of economic impact using the IMPLAN model.

With these two resources at its disposal, i.e. the comprehensive tactical mapping of past border security impacts and the economic impact modeling of future security deployments, CBP and USBP will be able to respond with greater efficiency and certainty and optimize its risk mitigation efforts.

Mapping Tool



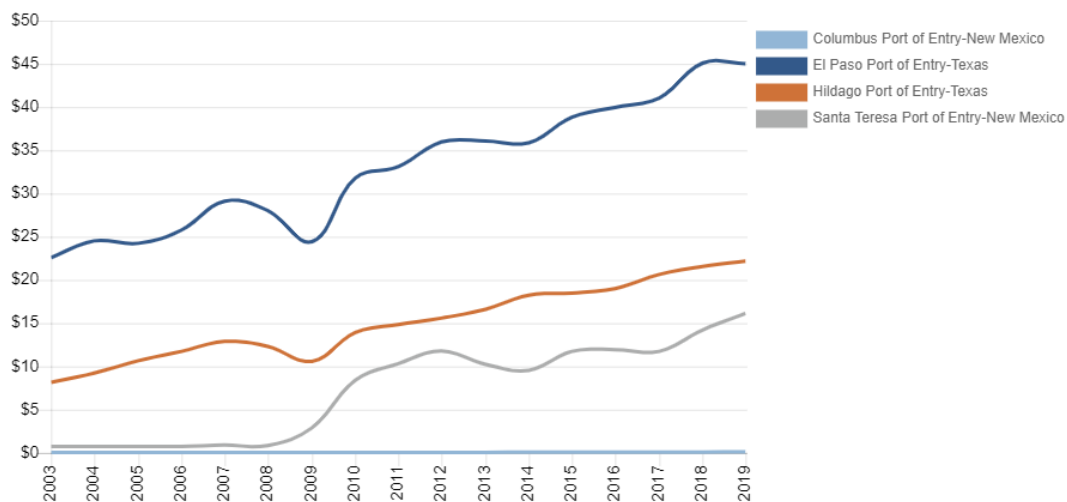
Total U.S. Illegal Apprehensions by Fiscal Year, Top 10 Countries



Source: U.S. Customs and Border Protection.

[Reset Data](#) |
 [Show Data](#) |
 [Hide Data](#) |
 [Graph Data](#) |
 [Save Co](#)

Total Imports by Port of Entry, USD Billion



Source: U.S. Census Bureau.

Source: U.S. Census Bureau.

[Reset Data](#) |
 [Show Data](#) |
 [Hide Data](#) |
 [Graph Data](#) |
 [Save Copy](#)

| Year | Columbus Port of Entry-New Mexico | El Paso Port of Entry-Texas | Hildago Port of Entry-Texas | Santa Teresa Port of Entry-New Mexico |
|------|-----------------------------------|-----------------------------|-----------------------------|---------------------------------------|
| 2003 | 0.048 | 22.591 | 8.143 | 0.743 |
| 2004 | 0.036 | 24.522 | 9.225 | 0.741 |
| 2005 | 0.035 | 24.244 | 10.664 | 0.757 |
| 2006 | 0.036 | 25.784 | 11.740 | 0.740 |
| 2007 | 0.049 | 29.119 | 12.885 | 0.911 |
| 2008 | 0.041 | 28.032 | 12.319 | 0.842 |
| 2009 | 0.059 | 24.434 | 10.592 | 2.913 |
| 2010 | 0.054 | 31.772 | 13.924 | 8.393 |
| 2011 | 0.059 | 33.112 | 14.845 | 10.323 |
| 2012 | 0.049 | 35.964 | 15.584 | 11.779 |
| 2013 | 0.058 | 36.081 | 16.616 | 10.238 |
| 2014 | 0.087 | 35.867 | 18.248 | 9.545 |
| 2015 | 0.080 | 38.824 | 18.478 | 11.739 |
| 2016 | 0.096 | 39.961 | 19.007 | 11.947 |
| 2017 | 0.091 | 41.055 | 20.645 | 11.745 |
| 2018 | 0.096 | 45.082 | 21.564 | 14.215 |
| 2019 | 0.116 | 45.018 | 22.180 | 16.140 |

The mapping tool provides visualization of historical social and economic data in the context of past border security deployments. Federal and state data is mapped against the border security deployments to demonstrate how U.S. border communities in the El Paso Sector have been impacted by past border security deployments and regulatory changes concerning immigration and customs enforcement. The Tactical Mapping Tool produced in this project can be replicated and expanded to provide a similar analysis of other Sectors along the US-Mexico border.

Files

[div2.csv](#)

Delete

successfulstudent.org/the-best-universities-fighting-human-trafficking/



BTI Institute's efforts in studying and fighting Human Trafficking have led to the University of Houston being recognized as a "Best University Fighting Human Trafficking" according to [SuccessfulStudent.org](https://successfulstudent.org).

From Our Partners

Hunt Institute for Global Competitiveness

[Newsletter](#)

utep.edu/hunt-institute/newsletter/index.html

Migration Policy Institute

[Research Publications](#)

migrationpolicy.org/research

Texas A&M Transportation Institute

[Publications](#)

tti.tamu.edu/publications/

National Consortium for the Study of
Terrorism and Responses to Terrorism,
University of Maryland

[Publications](#)

start.umd.edu/publications

National Center for Risk and Economic
Analysis of Terrorism Events, University
of Southern California

[Publications](#)

create.usc.edu/publications-recent/

For more information on the Department of Homeland Security Science and Technology Directorate and the DHS Center of Excellence Network, visit www.dhs.gov/science-and-technology/centers-excellence.

BTI Institute Newsletter

A Department of Homeland
Security Center of Excellence

July to September 2020 | Program Year 6 Quarter 1

Acknowledgment: This material is based upon work supported by the U.S. Department of Homeland Security under Grant Award Number 17STBTI00001-02-06, formerly 2015-ST-061-BSH001.

Disclaimer: The views and conclusions contained in this document are those of the authors and should not be interpreted as necessarily representing the official policies, either expressed or implied, of the U.S. Department of Homeland Security.

